

**PETTIBONE®**

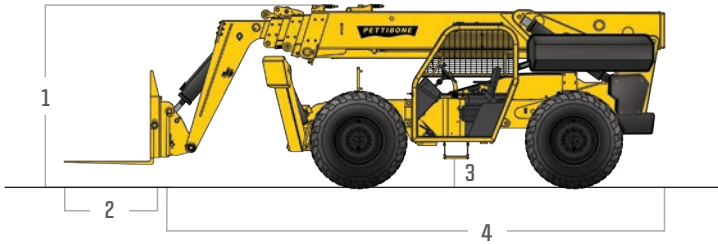
# » EXTENDO 1056B

TIER 4 FINAL - SPECIFICATIONS



Featuring heavy-duty lift cylinders and other rugged components, the Pettibone® Extendo™ 1056B is designed to move loads on the toughest jobsites. Superior reach, lift capacity and maneuverability combine to make the 1056B one of the most productive telehandlers on the market. Furthermore, incredible visibility from the cab and a responsive hydraulics system allow operators to work safely and efficiently at all times.

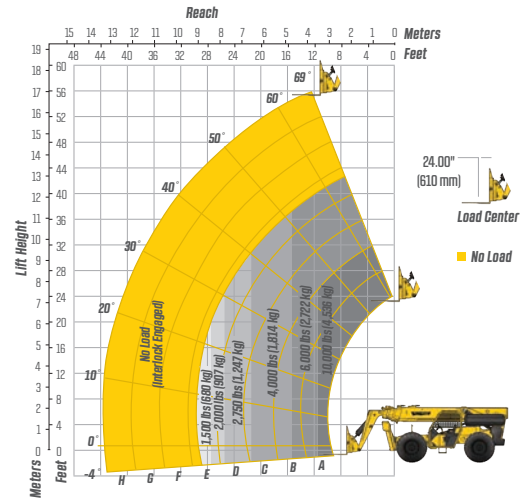
# SPECIFICATIONS



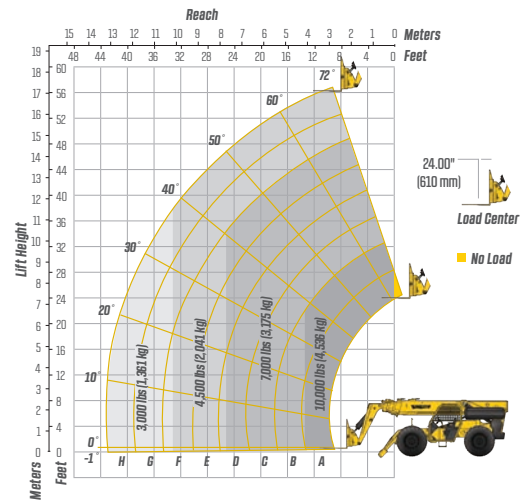
DIMENSIONS		
1	Overall Height	8' (244 cm) boom down
2	Fork Carriage	48" (122 cm) standard
3	Ground Clearance	18.8" (48 cm)
4	Overall Length	24' 5" (744 cm) to fork frame
	Overall Width	8' 6" (259 cm)
	Pallet Forks	2.25 x 4 x 48" standard
	Total Operating Weight	32,430 lbs (14,710 kg)
ENGINE		
	Model/Power	117 HP (87 kW) Cummins® QSF 3.8L Tier 4 turbo diesel with electronic control & protection
	DEF Tank	5 gal. (19 L)
	Fuel Tank	32.6 gal. (123 L)
HYDRAULICS		
	System	Pressure comp, axial piston
	Features	Auxiliary boom tip hydraulics, quick disconnect for attachments
	Controls	Single joystick, pilot operated
PERFORMANCE		
	Max Load Capacity	10,000 lbs (4,536 kg)
	Maximum Lift Height	56' (1,707 cm)
	Maximum Forward Reach	42' 1" (1,283 cm) at 24" LC
	Below Grade Reach	3' 11" (119 cm)
	Maximum Travel Speed	20 mph (32 km/h)
	Turning Radius	12' 6" (381 cm)
	Frame	24° of leveling (12° right and left); rear axle stabilization system; fits under 8' doorway, outriggers
	Transmission	Fully modulated Carraro® Powershift, 4-speed forward & reverse; parking brake engaged transmission declutch
	Axles	Carraro outboard planetary; 4-wheel drive
	Steering	4 wheel, 2 wheel and crab steer
	Brakes	Oil-immersed inboard disc service brakes, integral park brake
	Tires	14.00 x 24, 16 ply air filled
	Boom	Automatic fork leveling without slave cylinders; 2 wide stance, heavy-duty lift cylinders

# LIFT PERFORMANCE

Standard Fork Frame



Standard Fork Frame (Outriggers Down)



# FEATURES & OPTIONS

OPERATOR CAB	
Unmatched visibility	Fully adjustable right-side armrest
Adjustable suspension seat with seat belt	Full set of gauges for instant machine status
AVAILABLE ATTACHMENTS	
Pallet, lumber and block forks	Truss boom
Side tilt carriages +/- 10°	Utility buckets
Side-swing carriage	
OPTIONS	
Light packages	Air-conditioned cab
Enclosed cab (HWD)	Foam and solid tires

\* Specifications are subject to change.



**PETTIBONE, LLC**  
 1100 Superior Avenue  
 Baraga, MI 49908  
 P: 906.379.4529  
 info@gopettibone.com  
 www.gopettibone.com



<b>1 Year</b>	Full machine and attachment
<b>2 Years</b>	Powertrain and major hydraulic components
<b>3 Years</b>	Machine structure

# WARRANTY