

EXTENDO 1530^X

PETTIBONE

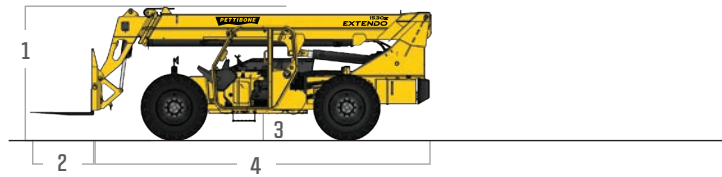
1530^X **EXTENDO**

The Pettibone® Extendo 1530X delivers a maximum 15,000 pounds of lift capacity, making it the ideal machine for heavy-duty material handling in pipe yards and highway construction jobs. The 1530X features a 2-section boom and user-friendly hydraulic controls, while offering a maximum lift height of 30 feet.

X-SERIES

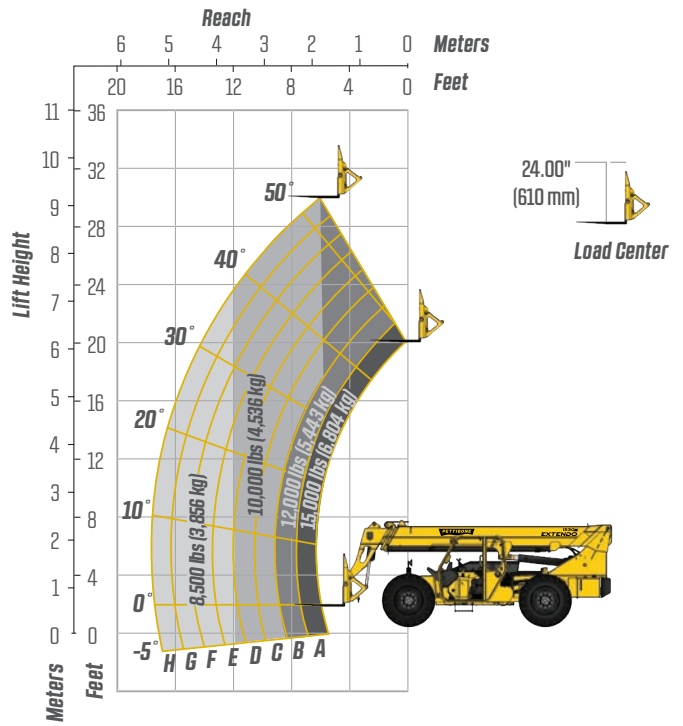


PRELIMINARY SPECIFICATIONS



DIMENSIONS		
1	Overall Height	9' (274 cm) boom down
2	Fork Carriage	48" (122 cm) standard
3	Ground Clearance	19" (48 cm)
4	Overall Length	22' 11" (699 cm) to fork frame
	Overall Width	8' 6" (259 cm)
	Pallet Forks	2.25x4x48" standard
	Approximate Operating Weight	31,050 lbs (14,084 kg) with foam-filled tires
ENGINE		
	Model/Power	117 HP (87 kW) Cummins® QSF3.8 Tier 4 turbo diesel with DEF and SCR aftertreatment
	DEF Tank	5 gal. (19 L)
	Fuel Tank	30 gal. (114 L)
HYDRAULICS		
	System	Pressure comp, axial piston pump
	Features	Fully proportional functions, auxiliary boom tip hydraulics, quick disconnect for attachments
	Controls	Single joystick, pilot operated
PERFORMANCE		
	Max Load Capacity	15,000 lbs (6,804 kg)
	Maximum Lift Height	30' (914 cm)
	Landing Height	27' (823 cm)
	Maximum Forward Reach	19' (579 cm)
	Below Grade Reach	2' (61 cm)
	Maximum Travel Speed	15.2 mph (24.5 km/h)
	Turning Radius	14' 4" (437 cm)
	Drawbar Pull (GVW)	28,600 lbs (12,973 kg)
	Frame	20° of leveling (10° right and left), rear axle stabilization system
	Transmission	Dana® VDT12000 Series, 3-speed Powershift, forward & reverse
	Axles	Dana 223 Series: 4-wheel drive, 45% limited slip front differential
	Steering	4 wheel, 2 wheel, and crab steer
	Brakes	Oil-immersed inboard disc service brakes, integral front SAHR park brake
	Tires	14.00 x 24, 16 ply, G2 tread foam standard
	Boom	2-section, slide pad; automatic fork leveling without slave cylinder

LIFT PERFORMANCE



FEATURES & OPTIONS

OPERATOR CAB	
X-Command® telematics Adjustable suspension seat with seat belt Single multifunction hydraulic joystick Analog/LCD gauge cluster	Split door design Flat, bolt-in glass Lockable storage area under seat
AVAILABLE ATTACHMENTS	
Pallet, lumber or block forks Utility bucket Side tilt carriage (+/- 10°) Truss boom	Standard carriage Hydraulic fork positioning carriage Pipe and pole baler
OPTIONS	
Premium gauge cluster w/7" digital display Rear-view camera system High output LED lighting package Solid tires	Various tire tread options available Enclosed cab, HWD (A/C available) Sling hook Bolt-on rear pintle hitch

* Specifications are subject to change.

PETTIBONE®

PETTIBONE, LLC

1100 Superior Avenue
Baraga, MI 49908

P: 906.379.4529
info@gopettibone.com
www.gopettibone.com

**2 - 5
WARRANTY**

2 Years/2,000 Hours : Bumper-to-bumper
5 Years/5,000 Hours : Machine structure

WARRANTY