

**EXTENDO 1044<sub>X</sub>**

**PETTIBONE®**

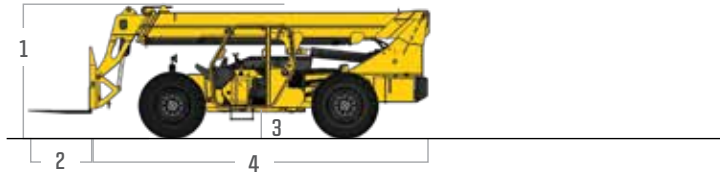
# 1044<sub>X</sub> **EXTENDO**

Providing a maximum load capacity of 10,000 pounds without the need for outriggers, the Pettibone® Extendo™ 1044X offers exceptional jobsite efficiency. Featuring leading hydraulics that deliver exceptional cycle times and controllability, the Extendo 1044X is designed with reduced maintenance and optimal performance in mind.

**X-SERIES**

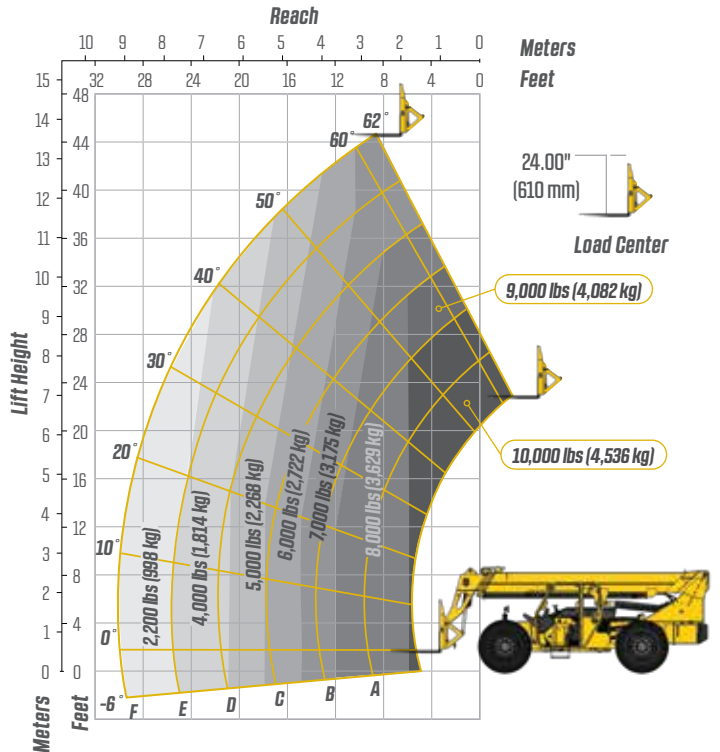


# SPECIFICATIONS



DIMENSIONS		
1	Overall Height	8' 3" (251 cm) boom down
2	Fork Carriage	48" (122 cm) standard
3	Ground Clearance	18" (46 cm)
4	Overall Length	22' 2" (676 cm) to fork frame
	Overall Width	8' 6" (259 cm)
	Pallet Forks	2.25x4x48" standard
	Curb Weight	23,900 lbs (10,841 kg)
ENGINE		
	Model/Power	74 HP (55 kW) Deutz® Tier 4 diesel with DOC muffler
	Fuel Tank	30 gal. (114 L)
HYDRAULICS		
	System	Pressure comp, axial piston pump
	Features	Fully proportional functions, auxiliary boom tip hydraulics, quick disconnect for attachments
	Controls	Single joystick, pilot operated
PERFORMANCE		
	Max Load Capacity	10,000 lbs (4,536 kg)
	Maximum Lift Height	44' 6" (1,356 cm)
	Landing Height	41' (1,250 cm)
	Maximum Forward Reach	30' (915 cm) at 24" LC
	Below Grade Reach	3' (92 cm)
	Maximum Travel Speed	15.2 mph (24.5 km/h)
	Turning Radius	14' 1" (429 cm)
	Drawbar Pull (GVW)	23,600 lbs (10,705 kg)
	Frame	20° of leveling (10° right and left), rear axle stabilization system
	Transmission	Dana® VDT12000 Series, 3-speed Powershift, forward & reverse
	Axles	Dana 212 Series: 4-wheel drive, 45% limited slip front differential
	Steering	4 wheel, 2 wheel, and crab steer
	Brakes	Oil-immersed inboard disc service brakes, integral front SAHR park brake
	Tires	13.00 x 24, 16 ply, G2 tread air-fill standard
	Boom	3-section, slide pad; automatic fork leveling without slave cylinder

# LIFT PERFORMANCE



# FEATURES & OPTIONS

OPERATOR CAB	
X-Command® telematics Adjustable suspension seat with seat belt Single multifunction hydraulic joystick Analog/LCD gauge cluster	Split door design Flat, bolt-in glass Lockable storage area under seat
AVAILABLE ATTACHMENTS	
Pallet, lumber or block forks Utility bucket Side tilt carriage (+/- 10°)	Truss boom Standard carriage Hydraulic fork positioning carriage
OPTIONS	
Premium gauge cluster w/7" digital display Rear-view camera system High output LED lighting package Solid or foam filled tires Various tire tread options available	Enclosed cab, HWD (A/C available) Sling hook Bolt-on rear pintle hitch 117 HP Cummins® diesel engine w/ SCR & DEF

\* Specifications are subject to change.

**PETTIBONE®**

## PETTIBONE, LLC

1100 Superior Avenue  
Baraga, MI 49908

P: 906.379.4529  
info@gopettibone.com  
www.gopettibone.com

**2 - 5  
WARRANTY**

**2 Years/2,000 Hours** : Bumper-to-bumper  
**5 Years/5,000 Hours** : Machine structure

# WARRANTY