

EXTENDO 1056^X

PETTIBONE

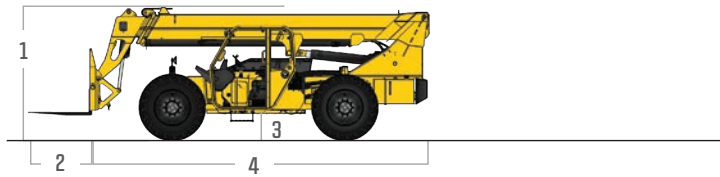
1056^X **EXTENDO**

Defined by rugged design and efficient operation, the Pettibone® Extendo™ 1056X offers superior longevity and performance for the long haul. Known for leading hydraulics that provide exceptional cycle times and controllability, the Extendo 1056X also offers strong machine and boom stability for enhanced safety.

X-SERIES

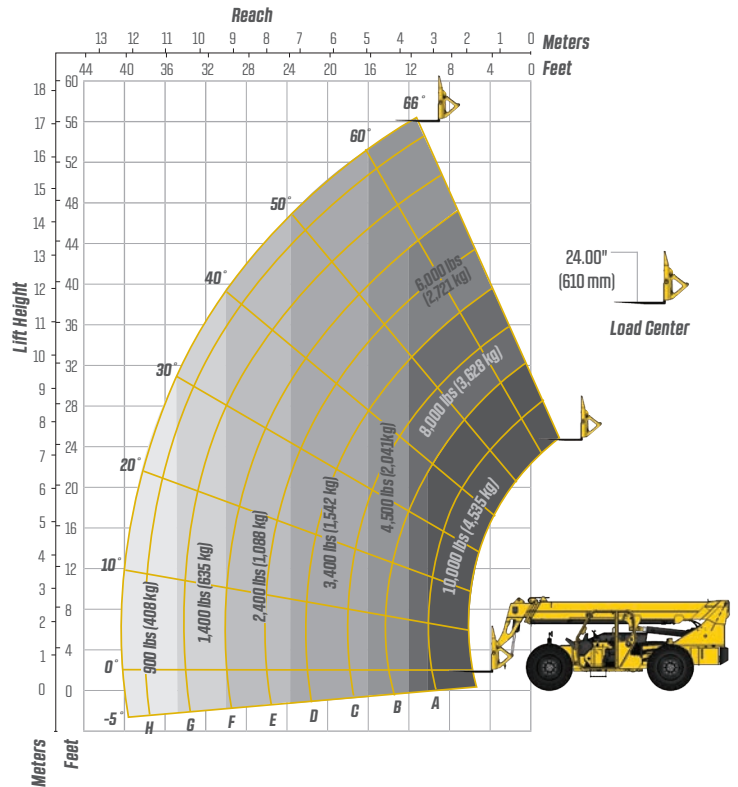


SPECIFICATIONS



| DIMENSIONS | | |
|-------------|------------------------------|---|
| 1 | Overall Height | 8' 11" (272 cm) boom down |
| 2 | Fork Carriage | 48" (122 cm) standard |
| 3 | Ground Clearance | 18" (46 cm) |
| 4 | Overall Length | 22' 11" (699 cm) to fork frame |
| | Overall Width | 8' 6" (259 cm) |
| | Pallet Forks | 2.25x4x48" standard |
| | Approximate Operating Weight | 27,500 lbs (12,474 kg) |
| ENGINE | | |
| | Model/Power | 120 HP (89.5 kW) Deutz® TCD 3.6 Tier 4 Final diesel with DEF and SCR aftertreatment |
| | Fuel Tank | 30 gal. (114 L) |
| HYDRAULICS | | |
| | System | Pressure comp, axial piston pump |
| | Features | Fully proportional functions, auxiliary boom tip hydraulics, quick disconnect for attachments |
| | Controls | Single joystick, pilot operated |
| PERFORMANCE | | |
| | Max Load Capacity | 10,000 lbs (4,536 kg) |
| | Maximum Lift Height | 56' 6" (1,722 cm) |
| | Landing Height | 52' (1,585 cm) |
| | Maximum Forward Reach | 40' (1,219 cm) at 24" LC |
| | Below Grade Reach | 3' (92 cm) |
| | Maximum Travel Speed | 15.2 mph (24.5 km/h) |
| | Turning Radius | 14' 4" (437 cm) |
| | Drawbar Pull (GVW) | 26,250 lbs (11,907 kg) |
| | Frame | 20° of leveling (10° right and left), rear axle stabilization system |
| | Transmission | Dana® VDT12000 Series, 3-speed Powershift, forward & reverse |
| | Axles | Dana 212 Series: 4-wheel drive, 45% limited slip front differential |
| | Steering | 4 wheel, 2 wheel, and crab steer |
| | Brakes | Oil-immersed inboard disc service brakes, integral front SAHR park brake |
| | Tires | 13.00 x 24, 16 ply, G2 tread air-fill standard |
| | Boom | 4-section, slide pad; automatic fork leveling without slave cylinder |

LIFT PERFORMANCE



FEATURES & OPTIONS

OPERATOR CAB

X-Command® telematics
Adjustable suspension seat with seat belt
Single multifunction hydraulic joystick
Analog/LCD gauge cluster

Split door design
Flat, bolt-in glass
Lockable storage area under seat

AVAILABLE ATTACHMENTS

Pallet, lumber or block forks
Utility bucket
Side tilt carriage (+/- 10°)

Truss boom
Standard carriage
Hydraulic fork positioning carriage

OPTIONS

Premium gauge cluster w/7" digital display
Rear-view camera system
High output LED lighting package
Solid or foam filled tires
Various tire tread options available

Enclosed cab, HWD (A/C available)
74 HP Deutz® Tier 4 diesel w/ DOC muffler
Sling hook
Bolt-on rear pintle hitch

* Specifications are subject to change.

PETTIBONE®

PETTIBONE, LLC

1100 Superior Avenue
Baraga, MI 49908

P: 906.379.4529
info@gopettibone.com
www.gopettibone.com

**2 - 5
WARRANTY**

2 Years/2,000 Hours : Bumper-to-bumper
5 Years/5,000 Hours : Machine structure

WARRANTY