

**TRAVERSE T1056X**

**PETTIBONE**

# T1056X TRAVERSE

The Pettibone® Traverse™ T1056X features an industry-exclusive extendable, traversing boom that moves loads by traveling horizontally. Providing up to 70 inches of horizontal boom transfer, the Traverse allows users to precisely place loads at full lift height without having to coordinate multiple boom functions.

**X-SERIES**



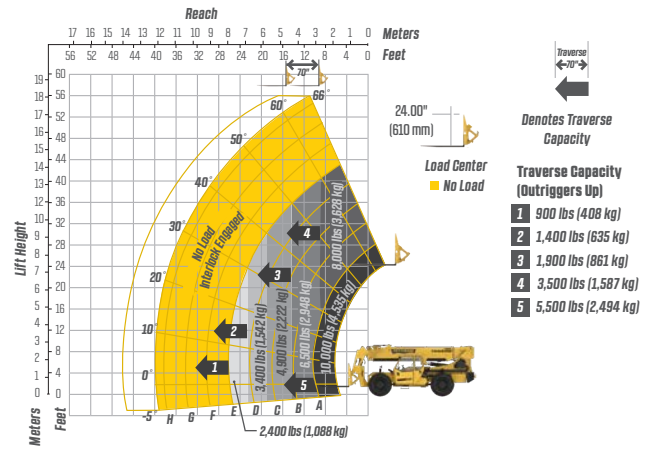
# SPECIFICATIONS



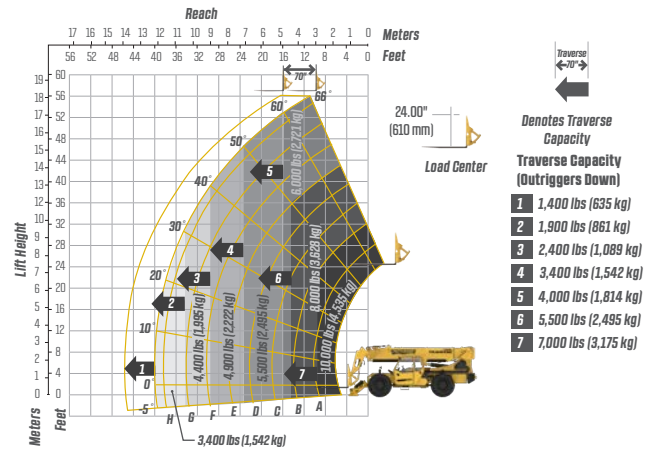
| DIMENSIONS  |                              |   |
|-------------|------------------------------|---|
| 1           | Overall Height               | 8' 11" (272 cm) boom down   |
| 2           | Fork Carriage                | 48" (122 cm) standard   |
| 3           | Ground Clearance             | 18" (46 cm)   |
| 4           | Overall Length               | 22' 11" (699 cm) to fork frame  |
|             | Overall Width                | 8' 6" (259 cm)  |
|             | Pallet Forks                 | 2.25x4x48" standard   |
|             | Approximate Operating Weight | 29,800 lbs (13,517 kg) with outriggers  |
| ENGINE      |                              |   |
|             | Model/Power                  | 120 HP (89.5 kW) Deutz® TCD 3.6 Tier 4 Final diesel with DEF and SCR aftertreatment           |
|             | DEF Tank                     | 5 gal. (19 L)   |
|             | Fuel Tank                    | 30 gal. (114 L)   |
| HYDRAULICS  |                              |   |
|             | System                       | Pressure comp, axial piston pump  |
|             | Features                     | Fully proportional functions, auxiliary boom tip hydraulics, quick disconnect for attachments |
|             | Controls                     | Single joystick, pilot operated   |
| PERFORMANCE |                              |   |
|             | Max Load Capacity            | 10,000 lbs (4,536 kg)   |
|             | Maximum Lift Height          | 56' 6" (1,722 cm)   |
|             | Landing Height               | 56' 6" (1,722 cm)   |
|             | Maximum Forward Reach        | 45' 10" (1,397 cm) traversed<br>40' (1,219 cm) non-traversed                                  |
|             | Below Grade Reach            | 3' (91 cm)  |
|             | Maximum Travel Speed         | 15.2 mph (24.5 km/h)  |
|             | Turning Radius               | 14' 4" (437 cm)   |
|             | Drawbar Pull (GVW)           | 29,150 lbs (13,222 kg)  |
|             | Frame                        | 20° of leveling (10° right and left), rear axle stabilization system                          |
|             | Transmission                 | Dana® VDT12000 Series, 3-speed Powershift, forward & reverse                                  |
|             | Axles                        | Dana 223 Series: 4-wheel drive, 45% limited slip front differential                           |
|             | Steering                     | 4 wheel, 2 wheel, and crab steer  |
|             | Brakes                       | Oil-immersed inboard disc service brakes, integral front SAHR park brake                      |
|             | Tires                        | 13.00 x 24, 16 ply, G2 tread air-fill standard  |
|             | Boom                         | 4-section, slide pad; automatic fork leveling without slave cylinder                          |

# LIFT PERFORMANCE

Standard Fork Frame (Outriggers Up)



Standard Fork Frame (Outriggers Down)



# FEATURES & OPTIONS

## OPERATOR CAB

X-Command® telematics  
Adjustable suspension seat with seat belt  
Single multifunction hydraulic joystick  
Analog/LCD gauge cluster

Split door design  
Flat, bolt-in glass  
Lockable storage area under seat

## AVAILABLE ATTACHMENTS

Pallet, lumber or block forks  
Utility bucket  
Side tilt carriage (+/- 10°)  
Truss boom

Standard carriage  
Hydraulic fork positioning carriage  
10' tower w/ standard carriage

## OPTIONS

Premium gauge cluster w/7" digital display  
Rear-view camera system  
High output LED lighting package  
Solid or foam filled tires

Various tire tread options available  
Enclosed cab, HWD (A/C available)  
Sling hook  
Bolt-on rear pintle hitch

\* Specifications are subject to change.

**PETTIBONE®**

## PETTIBONE, LLC

1100 Superior Avenue  
Baraga, MI 49908

P: 906.379.4529  
info@gopettibone.com  
www.gopettibone.com

**2 - 5  
WARRANTY**

**2 Years/2,000 Hours**

**5 Years/5,000 Hours**

Bumper-to-bumper

Machine structure

# WARRANTY